

**Exploding Poly
Tanks: Buy Them
Right and Inspect
Them Now**























TK 10500V-HD/NAT 1.5



C042065

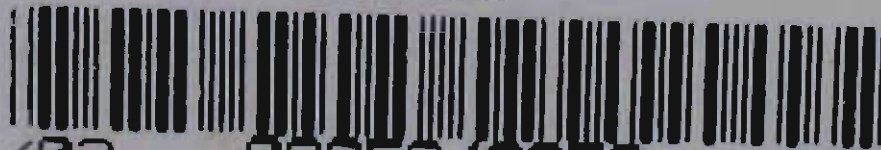


MA42065

1



533037



05/12/03

0305348959

SNYDER INDUSTRIES, INC. LINCOLN, NE.



110404072

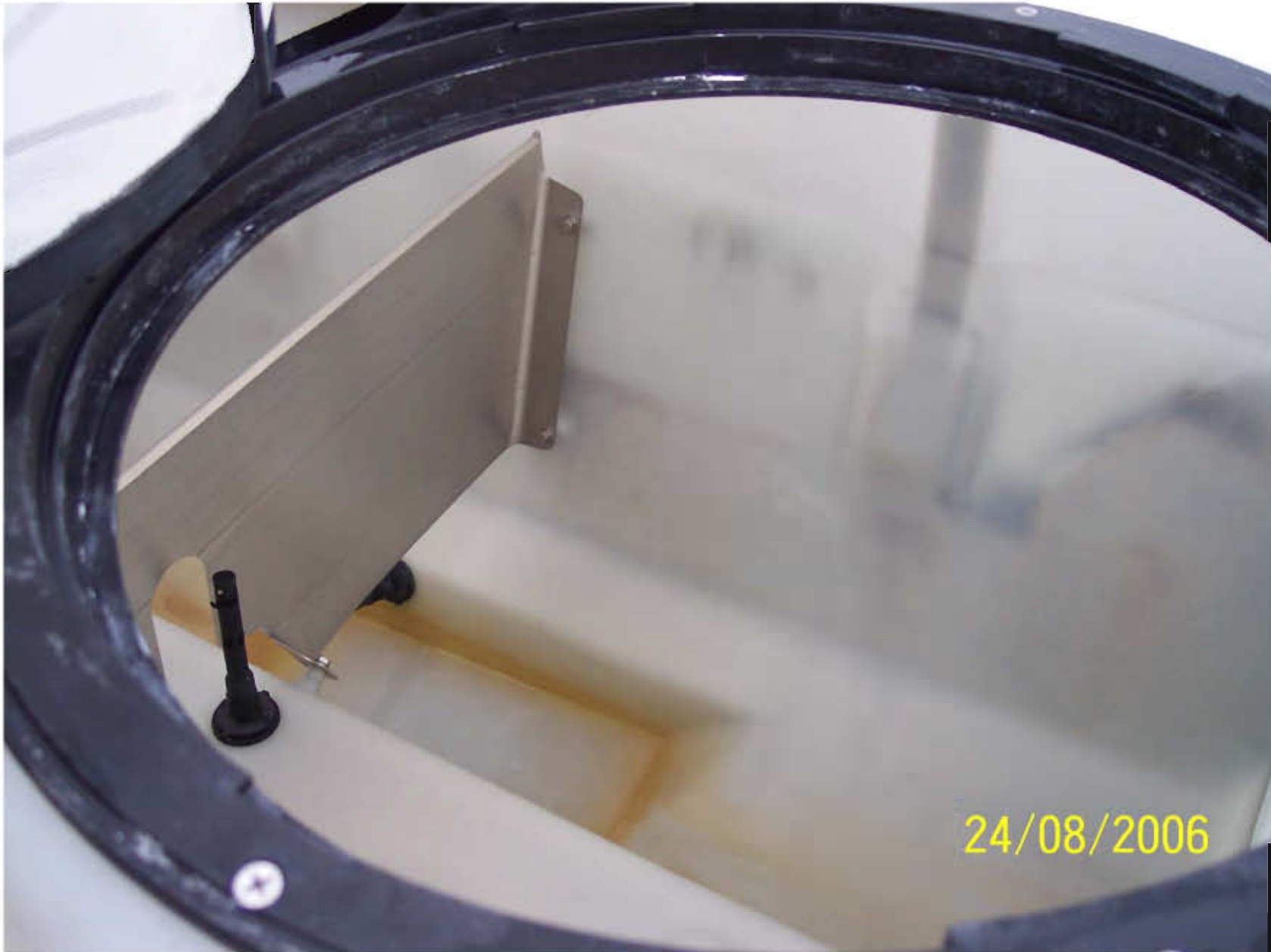












24/08/2006















WARNING

TIGHTEN BANDS/HOOPS AFTER FILLING

BANDS AND/OR HOOPS SHALL BE TIGHTENED TO REMOVE ALL GAP BETWEEN BANDS/HOOPS AND TANK BEFORE FILLING AND AFTER FILLING BUT NOT CAUSING TANK DISTORTION.

 **SNYDER**
industries, inc

P.O. BOX 4583, LINCOLN, NE 68504

























060110

CE MANEKO
MILLITE SALON
MILWAUKEE, WI























2 x 2-
CHO
WEAT

WARNING

EXCESSIVE WEIGHT OF HEAVY SHUT-OFF VALVES OR HEAVY HOSES MUST NOT BE CARRIED BY THE OUTLETS.

CHECK COMPATIBILITY OF GASKET MATERIAL WITH PRODUCT TO BE STORED.

NORWESCO VALVES AND FITTINGS ARE RECOMMENDED FOR ALL COMPATIBLE PLUMBING REQUIREMENTS.































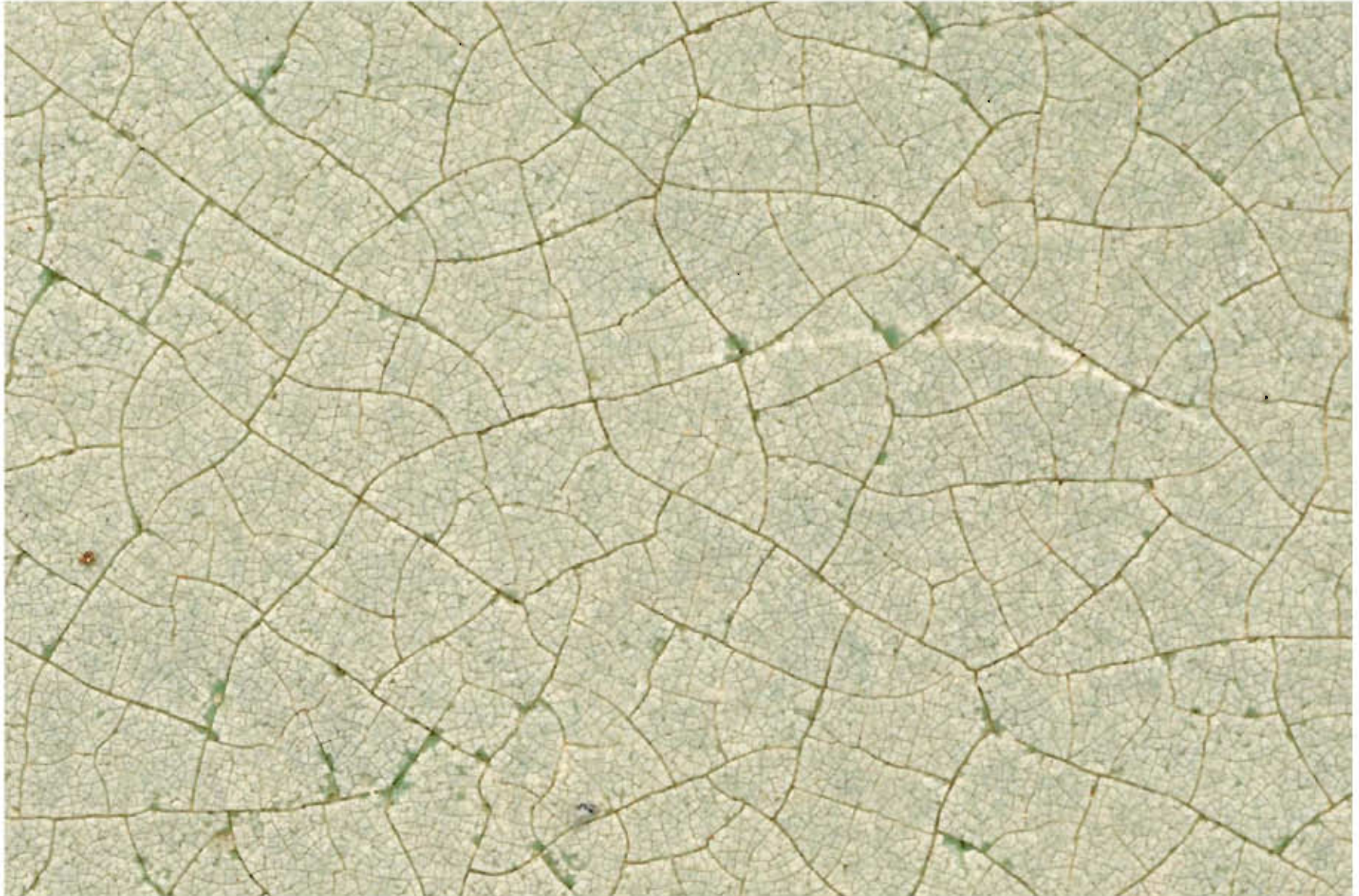


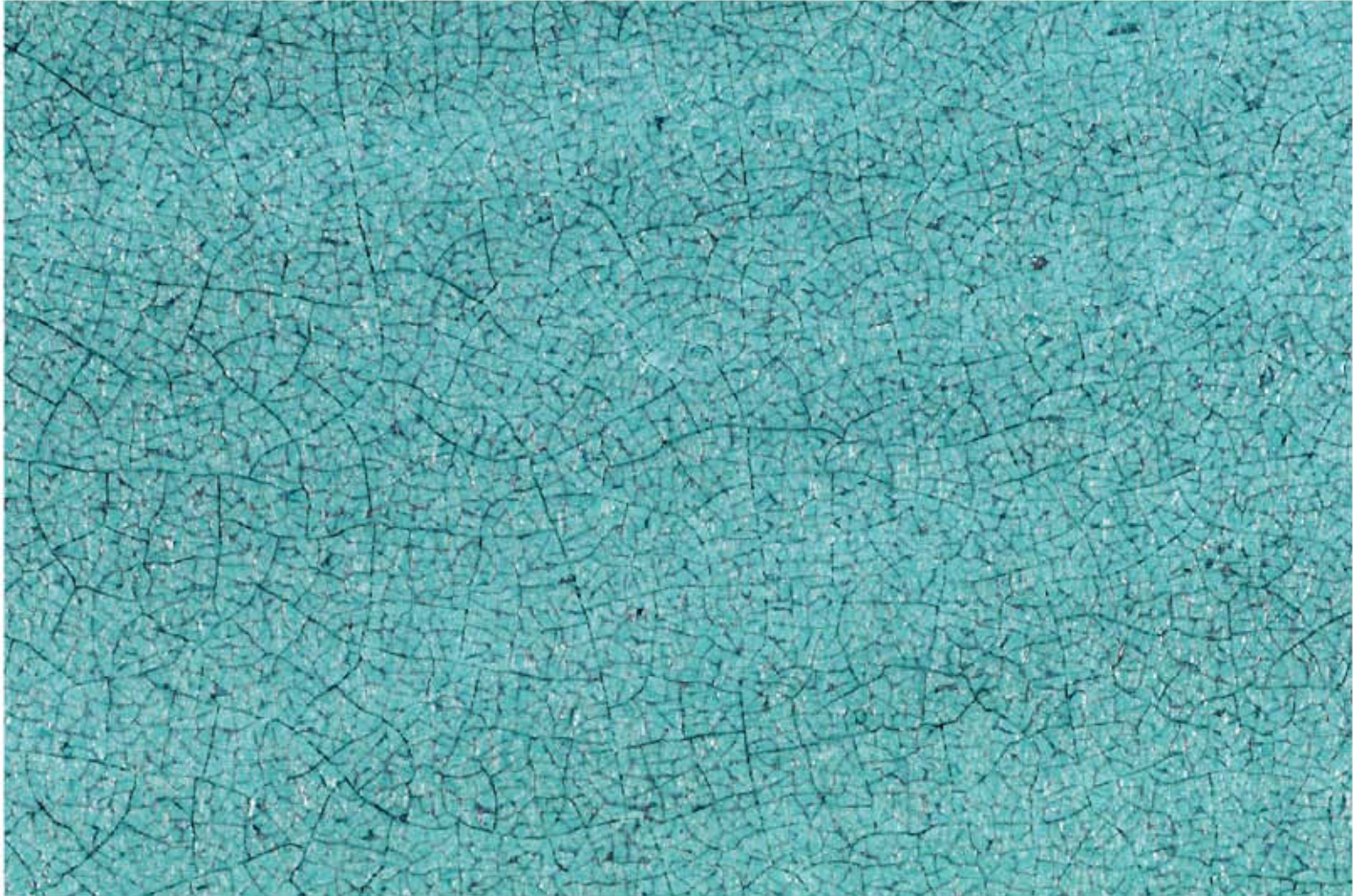




























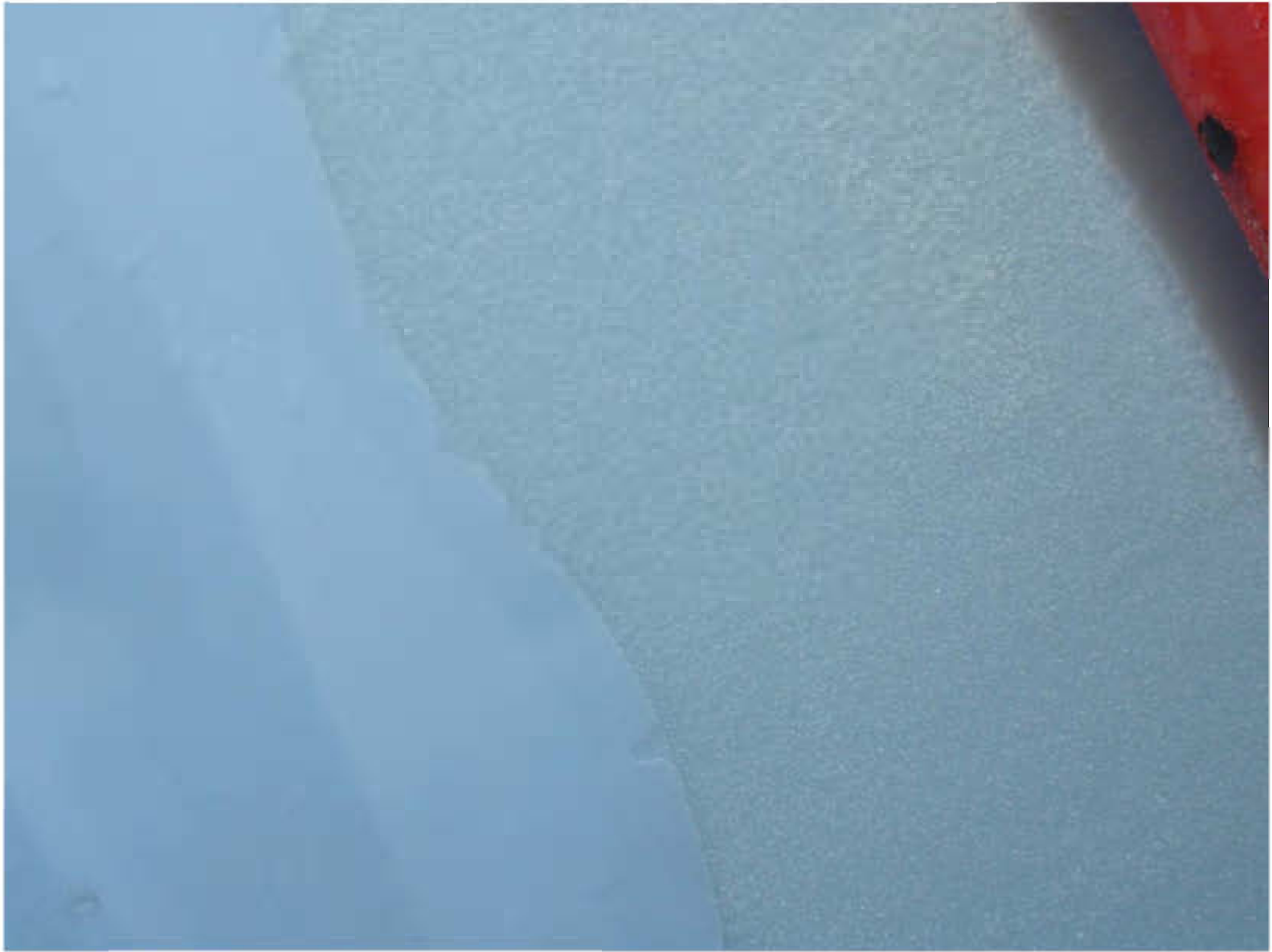
















When buying your next tank—

- **What size tank do I need?**
- **Will it be used on the road or on the ground?**
- **What tank density should I buy?**
- **How much does the tank cost?**
- **Compare product lines: Poly (x), fiberglass (2x), stainless steel (5x)**

